

## Chorley and South Ribble Hospital Emergency Department

### Monthly Bulletin: January to December 2009

This bulletin provides a breakdown of all injury attendances at Chorley and South Ribble Hospital Emergency Department (ED) between January and December 2009.

Between January and December 2009 there were 29,238 attendances to Chorley and South Ribble Hospital ED. The month with the highest attendance was June with 2,753 attendances (**Figure 1**). There were more male than female attendances presenting at Chorley and South Ribble Hospital ED (males=15,975; 55%).

**Figure 2** illustrates the age group of ED attendances for each month. The majority of ED attendances were aged 30-59 (n=10,112; 35%) and 27% were 30-59 years old (n=7,871).

**Table 1** details the injury group of ED attendances. For over half (56%) of attendances, injury group was recorded as other accident. Of those injury groups recorded, falls accounted for 26% of attendances, sports injury 8%, road traffic collisions (RTCs) 7% and assaults 3%.

**Table 2** shows the location of incident for patients attending to Chorley and South Ribble Hospital ED. The primary incident location for injury attendances was in the home where over a third (34%) of injuries occurred. This was followed by other location (20%) and public place (14%). The discharge destination for injury attendances is displayed in **Table 3**. It indicates that over six in ten (61%) attendances were

discharged with no follow-up treatment. More than one in ten attendances were discharged into the care of their GP (12%) or referred to the fracture clinic (11%).

#### Assault attendances

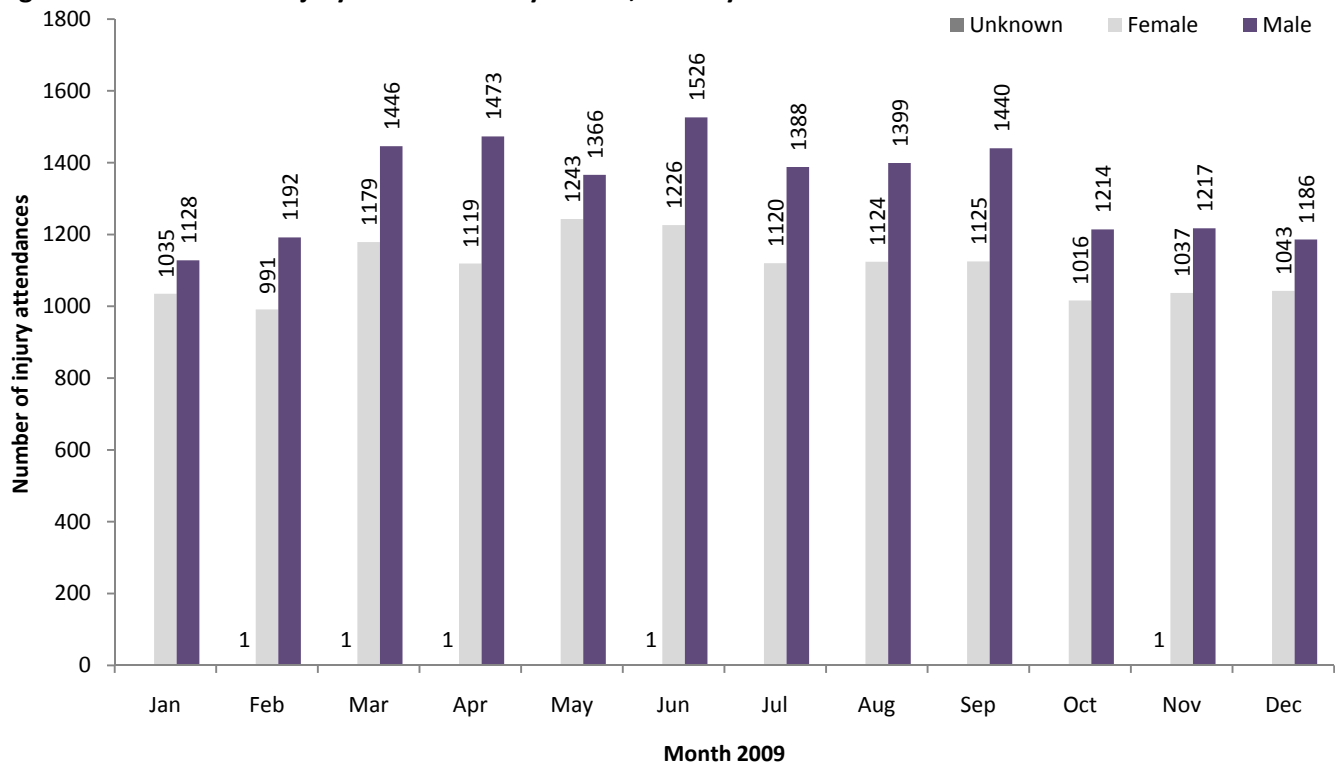
Between January and December 2009 there were 830 assault attendances to Chorley and South Ribble Hospital ED. The month with the highest attendance was July with 86 attendances (**Figure 3**). There were more male than female assault attendances presenting at Chorley and South Ribble District General Hospital ED (males=586; 71%).

**Table 4** details the age group of assault attendances for each month. The majority of ED assault attendances were aged 15-29 (n=466; 56%) and 33% were 30-59 years old (n=277).

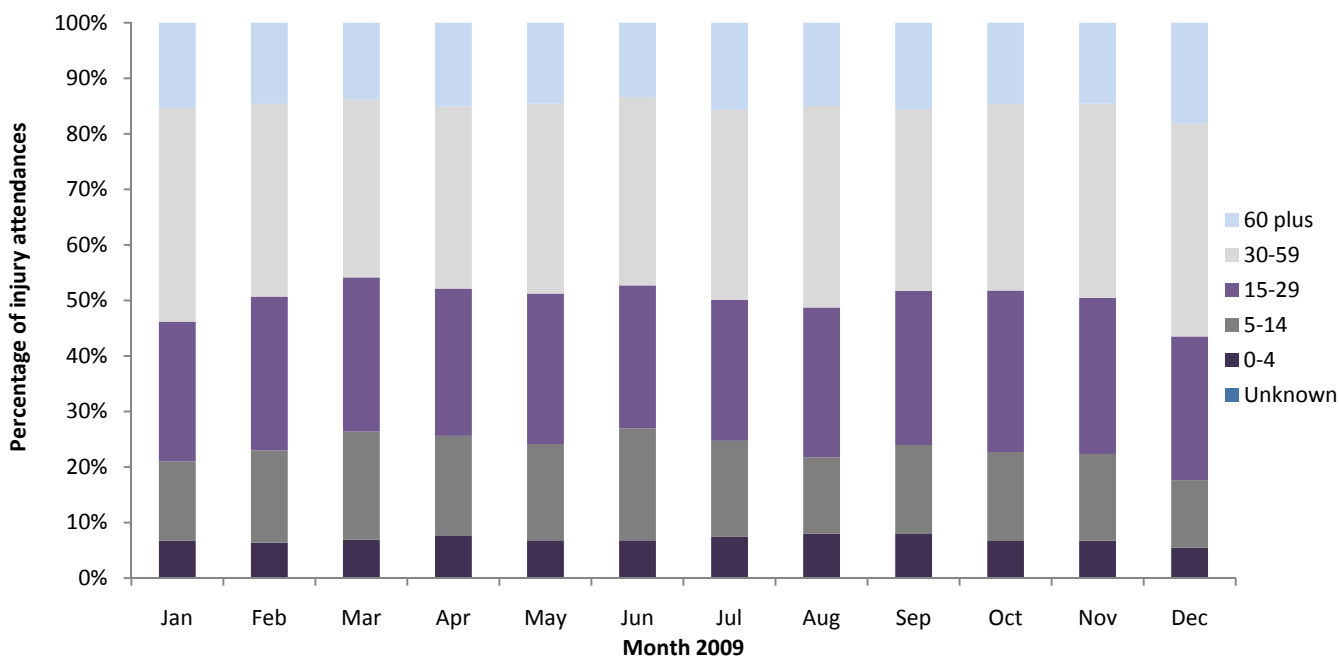
**Table 5** illustrates the incident location for assault attendances to Chorley and South Ribble Hospital ED. The primary incident location for assault attendances was in a public place (41%), it was followed by other location (27%) and home (18%).

The discharge destination for assault attendances is displayed in **Table 6**. It indicates that six in ten (60%) assault attendances were discharged with no follow-up treatment. Three in ten attendances were required follow-up treatment (29%) and 6% of assault attendees had to be admitted into hospital.

**Figure 1: Gender of ED injury attendances by month, January to December 2009**



**Figure 2: Age group of ED injury attendances by month, January to December 2009**



**Table 1: ED injury attendances by injury group and month, January to December 2009<sup>12</sup>**

| Injury group         | Jan         | Feb         | Mar         | Apr         | May         | Jun         | Jul         | Aug         | Sep         | Oct         | Nov         | Dec         | Total        | %          |
|----------------------|-------------|-------------|-------------|-------------|-------------|-------------|-------------|-------------|-------------|-------------|-------------|-------------|--------------|------------|
| Other accident       | 1201        | 1208        | 1498        | 1431        | 1477        | 1550        | 1449        | 1489        | 1433        | 1213        | 1279        | 1096        | 16324        | 56         |
| Fall                 | 599         | 585         | 612         | 682         | 695         | 761         | 643         | 619         | 659         | 536         | 538         | 807         | 7736         | 26         |
| Sports injury        | 133         | 172         | 252         | 221         | 175         | 191         | 151         | 179         | 212         | 233         | 183         | 103         | 2205         | 8          |
| RTC                  | 145         | 133         | 178         | 183         | 172         | 175         | 165         | 135         | 172         | 163         | 182         | 154         | 1957         | 7          |
| Assault              | 58          | 62          | 72          | 63          | 77          | 69          | 86          | 83          | 77          | 75          | 56          | 52          | 830          | 3          |
| Deliberate self-harm | 27          | 24          | 14          | 13          | 13          | 7           | 14          | 18          | 12          | 10          | 17          | 17          | 186          | 1          |
| <b>Total</b>         | <b>2163</b> | <b>2184</b> | <b>2626</b> | <b>2593</b> | <b>2609</b> | <b>2753</b> | <b>2508</b> | <b>2523</b> | <b>2565</b> | <b>2230</b> | <b>2255</b> | <b>2229</b> | <b>29238</b> | <b>100</b> |

<sup>1</sup>Please note that all numbers less than five have been suppressed (with \*\*\*) in line with patient confidentiality and if there is only one number less than five in a category then two numbers will be suppressed to prevent back calculations from totals.

<sup>2</sup>Please note percentages might not add to one hundred due to rounding

**Table 2: ED injury attendances by location of incident and month, January to December 2009<sup>3</sup>**

| Location                  | Jan         | Feb         | Mar         | Apr         | May         | Jun         | Jul         | Aug         | Sep         | Oct         | Nov         | Dec         | Total        | Total      |
|---------------------------|-------------|-------------|-------------|-------------|-------------|-------------|-------------|-------------|-------------|-------------|-------------|-------------|--------------|------------|
| Home                      | 814         | 813         | 877         | 837         | 864         | 831         | 854         | 878         | 847         | 742         | 787         | 767         | 9911         | 34         |
| Other                     | 473         | 328         | 474         | 537         | 597         | 650         | 485         | 442         | 467         | 415         | 391         | 454         | 5713         | 20         |
| Public place              | 247         | 301         | 367         | 412         | 363         | 360         | 357         | 414         | 360         | 294         | 273         | 447         | 4195         | 14         |
| Work                      | 226         | 269         | 272         | 244         | 227         | 265         | 262         | 261         | 286         | 212         | 278         | 220         | 3022         | 10         |
| Sport                     | 137         | 177         | 217         | 222         | 184         | 185         | 159         | 213         | 240         | 252         | 196         | 94          | 2276         | 8          |
| Educational establishment | 136         | 153         | 232         | 104         | 129         | 171         | 116         | ***         | 146         | 151         | 182         | 113         | 1635         | 6          |
| Home other persons        | 48          | 57          | 78          | 66          | 70          | 85          | 84          | 91          | 57          | 37          | 42          | 56          | 771          | 3          |
| Garden                    | 13          | 12          | 25          | 78          | 58          | 81          | 71          | 59          | 48          | 24          | 23          | 12          | 504          | 2          |
| Holiday                   | 32          | 25          | 36          | 23          | 37          | 45          | 46          | 66          | 57          | 29          | 14          | 11          | 421          | 1          |
| Public building           | 13          | 19          | 15          | 27          | 33          | 20          | 12          | 12          | 11          | 17          | 33          | 29          | 241          | 1          |
| Public park/playground    | 8           | 7           | 12          | 25          | 25          | 22          | 28          | 49          | 17          | 18          | 9           | 6           | 226          | 1          |
| Nursery                   | 9           | 8           | 16          | 6           | 7           | 12          | 13          | 6           | 9           | 6           | 11          | ***         | 107          | 0          |
| Special event             | ***         | 5           | ***         | ***         | 5           | 13          | 8           | 17          | 9           | 10          | 5           | ***         | 82           | 0          |
| Hospital                  | ***         | 5           | ***         | ***         | 6           | 5           | 6           | 9           | 6           | 8           | 5           | 6           | 64           | 0          |
| Prison                    | ***         | ***         | ***         | 7           | ***         | 8           | 5           | ***         | 5           | 13          | ***         | 5           | 62           | 0          |
| Bus station               | ***         | ***         | ***         | ***         | ***         | ***         | ***         | ***         | ***         | ***         | ***         | ***         | ***          | 0          |
| Public transport          | ***         | ***         | ***         | ***         | ***         | ***         | ***         | ***         | ***         | ***         | ***         | ***         | ***          | 0          |
| <b>Total</b>              | <b>2163</b> | <b>2184</b> | <b>2626</b> | <b>2593</b> | <b>2609</b> | <b>2753</b> | <b>2508</b> | <b>2523</b> | <b>2565</b> | <b>2230</b> | <b>2255</b> | <b>2229</b> | <b>29238</b> | <b>100</b> |

**Table 3: ED injury attendances by discharge destination and month, January to December 2009<sup>45</sup>**

| Discharge destination         | Jan         | Feb         | Mar         | Apr         | May         | Jun         | Jul         | Aug         | Sep         | Oct         | Nov         | Dec         | Total        | %          |
|-------------------------------|-------------|-------------|-------------|-------------|-------------|-------------|-------------|-------------|-------------|-------------|-------------|-------------|--------------|------------|
| Discharged - no follow-up     | 1199        | 1315        | 1648        | 1561        | 1478        | 1724        | 1623        | 1548        | 1564        | 1477        | 1451        | 1325        | 17913        | 61         |
| Discharged - follow-up GP     | 317         | 238         | 319         | 349         | 405         | 281         | 270         | 309         | 264         | 202         | 238         | 237         | 3429         | 12         |
| Fracture clinic               | 261         | 257         | 278         | 304         | 289         | 312         | 261         | 303         | 281         | 208         | 209         | 317         | 3280         | 11         |
| ED clinic                     | 127         | 110         | 108         | 123         | 124         | 123         | 116         | 118         | 145         | 103         | 120         | 77          | 1394         | 5          |
| Admitted CDGH                 | 88          | 100         | 84          | 46          | 88          | 74          | 60          | 75          | 67          | 62          | 64          | 79          | 887          | 3          |
| Admitted RPH                  | 54          | 49          | 62          | 68          | 79          | 78          | 64          | 53          | 65          | 61          | 38          | 58          | 729          | 2          |
| Outpatient clinic             | 34          | 47          | 41          | 37          | 46          | 48          | 36          | 38          | 47          | 47          | 43          | 41          | 505          | 2          |
| Other healthcare professional | 39          | 35          | 35          | 48          | 47          | 50          | 38          | 32          | 50          | 29          | 44          | 47          | 494          | 2          |
| Left - before treatment       | 32          | 19          | 35          | 44          | 38          | 53          | 22          | 35          | 69          | 24          | 35          | 37          | 443          | 2          |
| Left - refused treatment      | 6           | 8           | 8           | 5           | 5           | ***         | 6           | 5           | ***         | 9           | 7           | 6           | 71           | 0          |
| Transferred to other HCP      | ***         | ***         | 5           | 7           | 6           | ***         | 8           | ***         | 5           | 6           | ***         | ***         | 55           | 0          |
| police custody                | ***         | ***         | ***         | ***         | ***         | ***         | ***         | ***         | ***         | ***         | ***         | ***         | 28           | 0          |
| Other                         | ***         | ***         | ***         | ***         | ***         | ***         | ***         | ***         | ***         | ***         | ***         | ***         | 10           | 0          |
| <b>Total</b>                  | <b>2163</b> | <b>2184</b> | <b>2626</b> | <b>2593</b> | <b>2609</b> | <b>2753</b> | <b>2508</b> | <b>2523</b> | <b>2565</b> | <b>2230</b> | <b>2255</b> | <b>2229</b> | <b>29238</b> | <b>100</b> |

## Assaults

**Table 4: ED assault attendances by age group and month, January to December 2009**

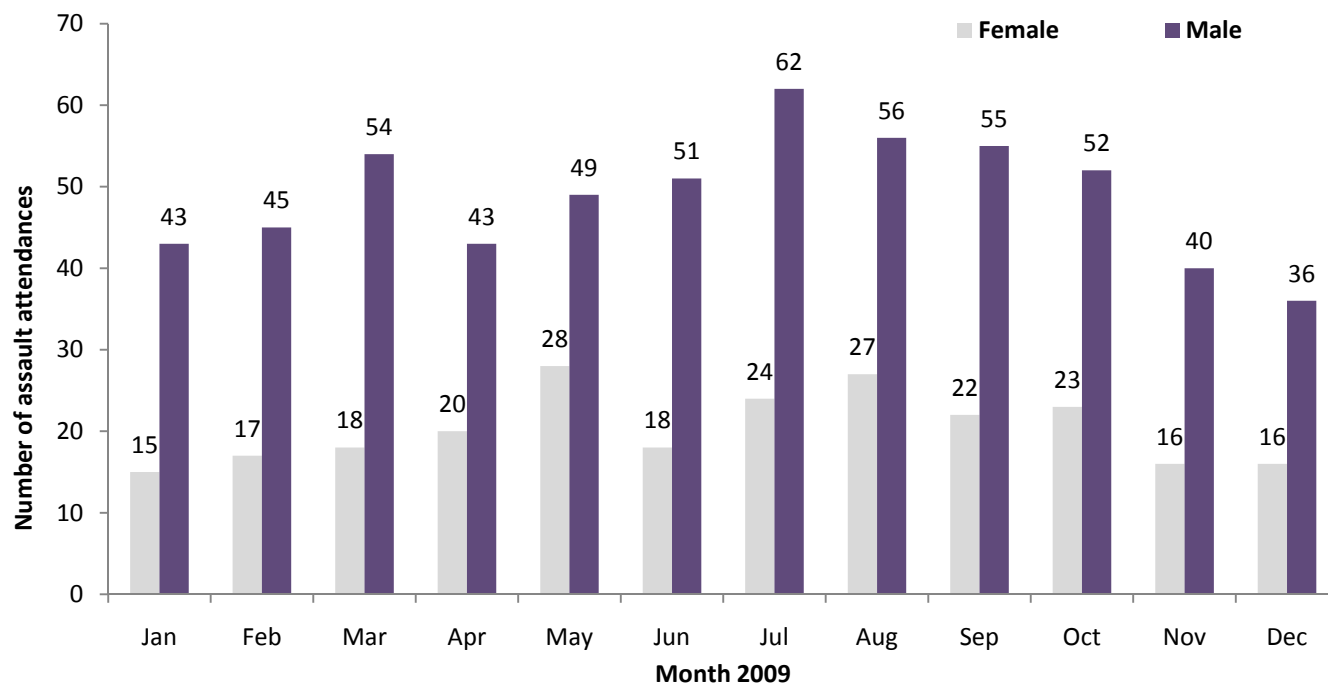
| Age traditional | Jan       | Feb       | Mar       | Apr       | May       | Jun       | Jul       | Aug       | Sep       | Oct       | Nov       | Dec       | Total      | %          |
|-----------------|-----------|-----------|-----------|-----------|-----------|-----------|-----------|-----------|-----------|-----------|-----------|-----------|------------|------------|
| Unknown         | ***       | ***       | ***       | ***       | ***       | ***       | ***       | ***       | ***       | ***       | ***       | ***       | ***        | 0          |
| 0-4             | ***       | ***       | ***       | ***       | ***       | ***       | ***       | ***       | ***       | ***       | ***       | ***       | ***        | 0          |
| 5-14            | ***       | 8         | 19        | 6         | 5         | 5         | 6         | ***       | ***       | ***       | 7         | ***       | 71         | 9          |
| 15-29           | 37        | 40        | 34        | 35        | 43        | 40        | 55        | 41        | 40        | 45        | 29        | 27        | 466        | 56         |
| 30-59           | 19        | 14        | 18        | 20        | 27        | 24        | 25        | 37        | 30        | 24        | 19        | 20        | 277        | 33         |
| 60 plus         | ***       | ***       | ***       | ***       | ***       | ***       | ***       | ***       | ***       | ***       | ***       | ***       | 13         | 2          |
| <b>Total</b>    | <b>58</b> | <b>62</b> | <b>72</b> | <b>63</b> | <b>77</b> | <b>69</b> | <b>86</b> | <b>83</b> | <b>77</b> | <b>75</b> | <b>56</b> | <b>52</b> | <b>830</b> | <b>100</b> |

<sup>3</sup> Educational establishment includes: educational establishment; school other; school; school playground; and, school sport. 'Public place' includes public place and playing out.

<sup>4</sup> 'Admitted to CDGH' includes: admitted; admitted to Chorley and South Ribble Hospital (CDGH); admitted to Healey/Yarrow Ward. 'Admitted to RPH' includes: admitted to Royal Preston Hospital (RPH); and, admitted to the Avondale Unit. 'Other' includes: primary care; other; dead on arrival; and, died in department.

<sup>5</sup> HCP=Health care provider, OP=out-patient and GP=general practitioner.

**Figure 3: Number of ED assault attendances by gender and month, January to December 2009**



**Table 5: ED assault attendances by incident location and month, January to December 2009<sup>6</sup>**

| Location                  | Jan       | Feb       | Mar       | Apr       | May       | Jun       | Jul       | Aug       | Sep       | Oct       | Nov       | Dec       | Total      | %          |
|---------------------------|-----------|-----------|-----------|-----------|-----------|-----------|-----------|-----------|-----------|-----------|-----------|-----------|------------|------------|
| Public place              | 21        | 26        | 36        | 20        | 33        | 28        | 31        | 37        | 30        | 34        | 25        | 22        | 343        | 41         |
| Other                     | 16        | 19        | 19        | 17        | 21        | 19        | 23        | 16        | 25        | 21        | 15        | 11        | 222        | 27         |
| Home                      | 14        | 10        | 8         | 13        | 10        | 13        | 18        | 17        | 15        | 11        | 12        | 8         | 149        | 18         |
| Home other                | ***       | ***       | ***       | ***       | ***       | ***       | 5         | 5         | ***       | ***       | ***       | 5         | 30         | 4          |
| Work                      | ***       | ***       | ***       | ***       | ***       | ***       | ***       | ***       | ***       | 7         | ***       | ***       | 28         | 3          |
| Educational establishment | ***       | ***       | 7         | ***       | ***       | ***       | ***       | ***       | ***       | ***       | ***       | ***       | 25         | 3          |
| Public building           | ***       | ***       | ***       | ***       | ***       | ***       | ***       | ***       | ***       | ***       | ***       | ***       | 16         | 2          |
| Public park/playground    | ***       | ***       | ***       | ***       | ***       | ***       | ***       | ***       | ***       | ***       | ***       | ***       | 6          | 1          |
| Garden                    | ***       | ***       | ***       | ***       | ***       | ***       | ***       | ***       | ***       | ***       | ***       | ***       | ***        | 0          |
| Holiday                   | ***       | ***       | ***       | ***       | ***       | ***       | ***       | ***       | ***       | ***       | ***       | ***       | ***        | 0          |
| Nursery                   | ***       | ***       | ***       | ***       | ***       | ***       | ***       | ***       | ***       | ***       | ***       | ***       | ***        | 0          |
| Prison                    | ***       | ***       | ***       | ***       | ***       | ***       | ***       | ***       | ***       | ***       | ***       | ***       | ***        | 0          |
| Special event             | ***       | ***       | ***       | ***       | ***       | ***       | ***       | ***       | ***       | ***       | ***       | ***       | ***        | 0          |
| Sport                     | ***       | ***       | ***       | ***       | ***       | ***       | ***       | ***       | ***       | ***       | ***       | ***       | ***        | 0          |
| <b>Total</b>              | <b>58</b> | <b>62</b> | <b>72</b> | <b>63</b> | <b>77</b> | <b>69</b> | <b>86</b> | <b>83</b> | <b>77</b> | <b>75</b> | <b>56</b> | <b>52</b> | <b>830</b> | <b>100</b> |

**Table 6: ED assault attendances by general discharge destination and month, January to December 2009**

| Discharge destination | Jan       | Feb       | Mar       | Apr       | May       | Jun       | Jul       | Aug       | Sep       | Oct       | Nov       | Dec       | Total      | %          |
|-----------------------|-----------|-----------|-----------|-----------|-----------|-----------|-----------|-----------|-----------|-----------|-----------|-----------|------------|------------|
| Admitted              | 5         | ***       | ***       | ***       | ***       | ***       | ***       | ***       | ***       | 7         | ***       | ***       | 46         | 6          |
| Discharged            | 31        | 41        | 44        | 40        | 39        | 43        | 54        | 53        | 45        | 48        | 35        | 23        | 496        | 60         |
| Follow-up             | 17        | 15        | 19        | 20        | 27        | 18        | 26        | 20        | 26        | 15        | 14        | 20        | 237        | 29         |
| Other                 | 5         | ***       | ***       | ***       | ***       | ***       | ***       | ***       | ***       | 5         | ***       | ***       | 51         | 6          |
| <b>Total</b>          | <b>58</b> | <b>62</b> | <b>72</b> | <b>63</b> | <b>77</b> | <b>69</b> | <b>86</b> | <b>83</b> | <b>77</b> | <b>75</b> | <b>56</b> | <b>52</b> | <b>830</b> | <b>100</b> |

Published April 2010

Dan Hungerford (North West TIIG Analyst)

Centre for Public Health, Liverpool John Moores University, 5<sup>th</sup> Floor, Kingsway House, Liverpool, L3 2AJ

Tel: 0151 231 8724 Email: d.j.hungerford@ljmu.ac.uk

Website: [www.tiig.info](http://www.tiig.info) (please note data requests should be made through the website)

<sup>6</sup> Educational establishment includes: educational establishment; school other; school; school playground; and, school sport. 'Public place' includes public place and playing out.